

“NURTURE TINY MINDS, BIG DREAMS”



ECE

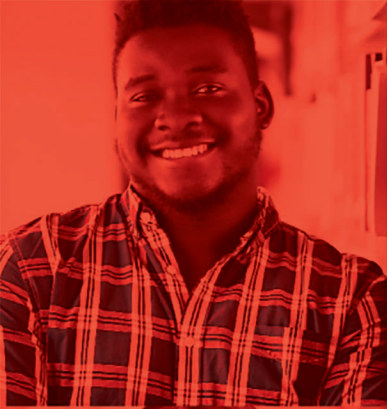
EARLY

CHILDHOOD
EDUCATION

We transform communities through education

www.wcc.ca/ece





TRANSFORMING
COMMUNITIES
THROUGH
EDUCATION





Program Overview

Early Childhood Education (ECE) program is designed for people who want to work with young children in day care centers, preschools, day camps and with any other childcare services. Our desire is to inspire tomorrow's education to stop, think and learn. To create inclusive, learningrich environments integral to the children's' well-being and to establish a depth in understanding how play and relationships are integral in the child's learning process.

Career Opportunities

Graduates from this program can work as Early Childhood Education once they apply for and are granted a certificate from ECE Registry. The certification by the Ministry of Children and Family Development provides students with a basic foundation of the knowledge and skills needed to work in early childhood educational settings (ages birth to five years) and earn upto 24\$ as Early Childhood Educator. This program makes you eligible for ECE Certification*

- **Early Childhood Program - Staff Assistant**
- **Early Childhood Assistant**
- **Early Childhood Education Worker**
- **Early Childhood Educator -Personal**
- **Earry Childhood Educator**
- **Early Childhood Supervisor**
- **Childcare worker - daycare**
- **Childcare worker assistant**
- **Daycare helper**
- **Daycare supervisor**
- **Daycare worker**
- **Preschool helper**
- **Preschool worker**

*ECE Certification requires submission of completed recognized ECE program and there are additional requirements for certification



PROGRAM ADMISSION REQUIREMENTS

Program Admission Requirements

Applicants will be required to meet the following minimum criteria:

Proof of Grade 12 graduation or mature student status (19 Years or older) AND Students will need to submit a proof of English Language Competency by any one of the following options:

Domestic Students

- Grade 10 English
- Successful completion of English Language Proficiency Assessment Test conducted by the college
- CLB Level 6 or more
- CELPIP Level 7 or more

International Students

- Successful completion of English Language Proficiency Test conducted by the college

Assessment	Assessment Name	Required Minimum Category
PTE	Pearson Test Of English (Academic)	Overall 50 or more
CELPIP	Canadian English Language Proficiency Index Program	Overall 7 or more
CLB	Canadian Language Benchmark	Level 6 or more
IELTS	International English Language Testing System	Overall 5.5 or more
TOEFL	Test of English as a Foreign Language, IBT	Overall 46 or more





PROGRAM DURATION & OUTLINE

Program Duration

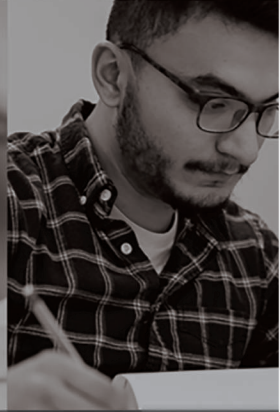
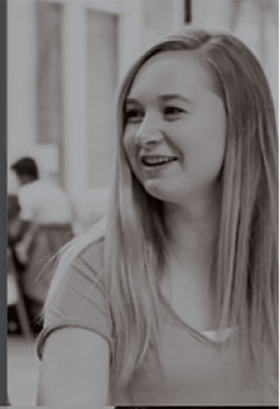
The Early Childhood Education program is a 969 hours program which is 40 weeks full time.

Course Name	# of Hours
Child Care Growth and Development I	45
Child Care Growth and Development II	45
Guidance and Caring	60
Foundation and Philosophy of ECE	60
Pedagogy and BC Early Learning Framework	50
Early Childhood Education I	60
Early Childhood Education II	30
Early Childhood Education III	30
Fostering Outdoor and Nature Play	30
Interpersonal Communication	45
Health, Safety and Nutrition	30
Practicum I Observation and Recording	112
Practicum II	186
Practicum III	186
TOTAL	360

Notes for Admission:

Additionally students will be required to complete the following third party certificates prior to graduation:







- Food Safe Level 1
- Emergency Child Care First Aid with CPR/AED Level B



WHY ECE?





-  Practicum Experience
-  Flexible Schedule
-  Scholarships
-  Earn up to C\$25 hourly
-  Student Support Services
-  Locational Advantage





Domestic Students

Fee information for the 2023 - 2024 year:

Particulars	Fees
Application Fee	\$250
Tuition Fee	\$16500
Material Fee	\$550
Textbooks Fee	\$1590
Scholarship	(\$8000)
TOTAL	\$10,890

International Students

Fee information for the 2023 - 2024 year:

Particulars	Fees
Application Fee	\$250
Tuition Fee	\$20500
Material Fee	\$550
Textbooks Fee	\$1590
Scholarship	(\$4750)
TOTAL	\$18,890

FEE STRUCTURE

Financial Assistance

Western Community College offers a variety of financial aid opportunities to ease students' stress and allow them to focus on their studies. If you need extra support, we have flexible funding to accommodate all our students, no matter their financial situation.

- BC Student Loan
- In-house Financing
- Student Line of Credit
- Scholarships
- Bursaries and Government grants available while studying and after graduation
- Our dedicated Financial Aid Officers will help you every step of the way

Bursaries

Since September 2018, the Early Childhood Educators of BC (ECEBC), in partnership with the Province of British Columbia, enhanced and expanded the ECE Bursary Program, now known as the ECE Education Support Fund (ECE ESF). This program consists of two funding streams:

1. The Early Childhood Education Student Bursary.
2. The Early Childhood Education Workforce Development Bursary.

ECE Student Bursary


This funding is to support students studying in an ECE program at a recognized post-secondary institution. Eligible applicants can apply for up to \$500 per course, to a maximum of 8 courses, for a total of \$4,000 per semester to assist with tuition while studying. Awarded amounts will be dependent on the number of completed courses. For instance, in the event an applicant enrolled in five courses, but only successfully completed three, the final payment will only reflect the three completed courses.



 **City Centre**
Unit 900 13761 96 Ave,
Surrey, BC V3V 1Z2
+1-604-594-3500
surreyinfo@wcc.ca

 **Scott Road**
Unit 201 8318 120 St
Surrey, BC V3W 3N4
+1-604-594-3500
info@wcc.ca

 **Abbotsford**
Unit 201, 3670 Townline Rd
Abbotsford, BC V2T 5W8
+1-604-776-1301
abbyinfo@wcc.ca

 **Other Campuses**
South Surrey
King George (Surrey)
Prince George