

“LAUNCH YOUR TEACHING CAREER”



EAD

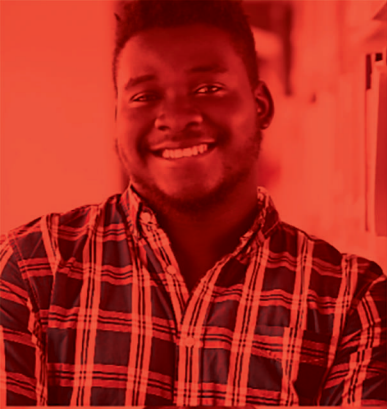
EDUCATION
ASSISTANT

DIPLOMA

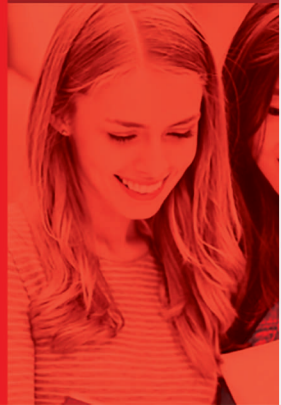
We transform communities through education

www.wcc.ca/ead





TRANSFORMING
COMMUNITIES
THROUGH
EDUCATION





Program Overview

This diploma program leads the students to be members of an education team, supporting students with special and diverse learning needs from Kindergarten through Grade 12 in British Columbia schools. Education Assistants assist elementary and high school teachers as they work with students who may require additional support, such as those with intellectual challenges, special behavioral needs, and limited English. the classroom and lab, and then through practicum.

Career Opportunities

Graduates of EAD program will be prepared for careers as education assistants in elementary and high schools and earning upto \$28 per hour. The career titles may be:

- **Education Assistant**
- **Behaviour Intervention Assistant**
- **Special Needs Assistant**
- **Applied Behaviour Support**
- **Teaching Assistant**



ADMISSION REQUIREMENTS

Program Admission Requirements

Applicants will be required to meet the following minimum criteria:

Proof of Grade 12 graduation or mature student status (19 Years or older) AND Students will need to submit a proof of English Language Competency by any one of the following options:

Domestic Students

- Grade 10 English
- Successful completion of English Language Proficiency Assessment Test conducted by the college

International Students

Assessment	Assessment Name	Required Minimum Category
PTE	Pearson Test Of English (Academic)	Overall 50 or more
CELPPI	Canadian English Language Proficiency Index Program	Overall 7 or more
CLB	Canadian Language Benchmark	Level 6 or more
IELTS	International English Language Testing System	Overall 5.5 or more
TOEFL	Test of English as a Foreign Language, IBT	Overall 46 or more





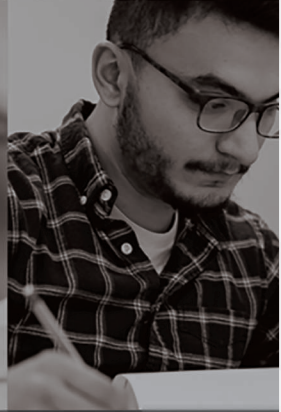
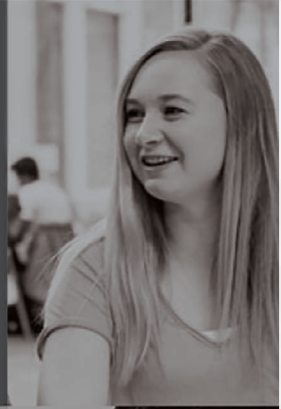
DURATION & OUTLINE

Program Duration

The Education Assistant Diploma program is a 755 hours program, for a full time student it will take 30 weeks and for a part time student it will take 43 weeks to finish the program and obtain the diploma.

Program Outline







Course Name	# of Hours
Interpersonal Communication and Teamwork	25
Introduction to Education Assistant	25
Fundamentals of Inclusive Education	40
Child Growth and Development 1	40
Child Growth and Development 2	35
Assistive Technology in the Classroom	50
Supporting Positive and Independent Behavior	50
Autism Spectrum Disorders	50
Applied Behavioral Analysis	25
Teaching Language and Communication to Students with Disabilities	40
Understanding Exceptional Learners	50
Mental Health and Addiction Literacy – Children and Youth	50
Educating Children and Young People with Fetal Alcohol Spectrum Disorders	25
Supporting Personal Care	50
Observation Assignment	30
Career Preparation	20
Practicum	150
TOTAL	755



WHY EAD?





-  Practicum Experience
-  Flexible Schedule
-  Scholarships
-  Earn up to C\$28 hourly
-  Student Support Services
-  Locational Advantage





FEE STRUCTURE

Domestic Students

Fee information for the 2022 - 2023 year:

Particulars	Fees
Application Fee	\$250
Tuition Fee	\$8260
Material Fee	\$250
Textbooks Fee	\$890
TOTAL	\$9650

International Students

Fee information for the 2022 - 2023 year:

Particulars	Fees
Application Fee	\$250
Tuition Fee	\$11480
Material Fee	\$250
Textbooks Fee	\$890
TOTAL	\$12870

FEE STRUCTURE

Monthly Fees Structure

Fee structure installment for Full Time Student or a Part Time Student.

Particulars	Fees	Month
Registration Fee	\$250	Registration Fee
1 st Installment	\$1400	1 st Month
2 nd Installment	\$1350	2 nd Month
3 rd Installment	\$1350	3 rd Month
4 th Installment	\$1350	4 th Month
5 th Installment	\$1350	5 th Month
6 th Installment	\$1350	6 th Month
7 th Installment	\$1250	7 th Month
TOTAL	\$9650	



For more information and to help you in planning your finances for this program, please speak with your admissions counselor. **Domestic students will also be able to apply for Student Aid BC.**


This program is offered under the written consent of the Minister of Advanced Education and Skills Training having undergone a quality assessment process and been found to meet the criteria established by the minister. Nevertheless, prospective students are responsible for satisfying themselves that the program will be appropriate to their needs (for example, acceptable to potential employers, professional licensing bodies, or other educational institutions).



 **City Centre**
Unit 900 13761 96 Ave,
Surrey, BC V3V 1Z2
+1-604-594-3500
surreyinfo@wcc.ca

 **Scott Road**
Unit 201 8318 120 St
Surrey, BC V3W 3N4
+1-604-594-3500
info@wcc.ca

 **Abbotsford**
Unit 201, 3670 Townline Rd
Abbotsford, BC V2T 5W8
+1-604-776-1301
abbyinfo@wcc.ca

 **Other Campuses**
South Surrey
King George (Surrey)
Prince George