

“TRANSFORMING LIVES THROUGH CARE”



HCA

HEALTH CARE --- ASSISTANT

We transform communities through education

www.wcc.ca/hca _____





TRANSFORMING COMMUNITIES THROUGH **EDUCATION**





Program Overview

The HCA Program is designed for students who want to be certified to work as a Health Care Assistant (HCA). Health care assistants are the frontline care providers in a variety of institutional and community settings. HCAs aid in the basic care of patients, under the direction of nurses, hospital staff, and physicians. They provide professional care and supervision in protective and supportive health care environments, for clients/residents who have complex health challenges. Through this course, students will gain skills and experience, first working in the classroom & lab, then practicum

Career Opportunities

Graduates of HCA program will gain specific skills in healthcare and be job ready on graduating and earning upto \$25 per hour. Every sub sector of healthcare industry requires skilled people. As a graduate from this program, you will be eligible for a number of job titles including:

- Hospital wards
- Residential long term facilities
- Extended care facilities
- Assisted living facilities
- Group homes
- Home support Agencies



PROGRAM ADMISSION REQUIREMENTS

Program Admission Requirements

Applicants will be required to meet the following minimum criteria:

Prior to acceptance:

- a. Proof of Grade 12 graduation or mature student status (19 Years or older) AND
- b. Candidates with following language benchmarks

Applicants Whose First Language is English

Evidence of one of the following:

- Proof of completion of Grade 10 English; or
- College courses determined to be equivalent to completion of Grade 10 English (or higher) by post-secondary institutions. Applicants must produce transcripts as evidence of completion. A minimum of a C grade is acceptable.
- Canadian Adult Achievement Test (CAAT): Reading Comprehension 35/50 Spelling 23/32
- Language Placement Index (LPI): The three individual scores (Sentence Structure, English Usage, and Reading Comprehension) must total a minimum of 20, out of a maximum possible score of 40. Essay level of 4, with a minimum essay score of 24/40
- Accuplacer: Grade 10 level or higher Recommended Cut Scores*: Reading Comprehension 60, Sentences Skill 55, Write placer 4



PROGRAM DURATION

Applicants Whose First Language is not English:

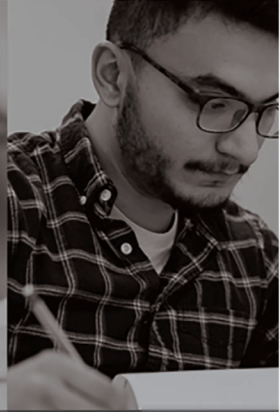
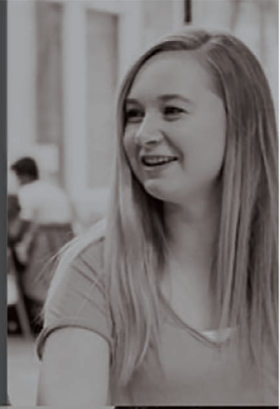
| Assessment | Assessment Name | Required Minimum Category |
|------------|---|---|
| CAEL | Canadian Academic English Language Assessment | Overall, 60 (with no section less than 50) |
| CELP | Canadian English Language Proficiency Index Program | Overall, 7 (with no less than 6 in reading and writing) |
| CLB | Canadian Language Benchmark | 7 |
| IELTS | International English Language Testing System | 6 (with no band less than 6.0) |
| TOEFL | Test of English as a Foreign Language, IBT | Overall, 76 (no score less than 20) |

Notes for Admission:

- Proof of meeting current immunizations / vaccinations as per health care organization policies / guidelines (or signed vaccination exemption form, except TB)
- Criminal record check from the Ministry of Public Safety and Solicitor General of Justice, including clearance to work with vulnerable adults
- Standard First Aid
- CPR Level “C” or “HCP”
- Foodsafe Level 1
- Provincial Violence Prevention Curriculum (PVPC) E-Learning Modules

Program Duration

Full Time 745 Hours/ 24 weeks
Part Time 745 Hours / 37 weeks.



WHY HCA?



www.wcc.ca



Practicum Experience



Flexible Schedule



Scholarships



Earn up to C\$25 hourly



Student Support Services



Locational Advantage



PROGRAM OUTLINE & FEE STRUCTURE

Program Outline

| Course Name | # of Hours |
|---|------------|
| Health and Healing: Concepts for Practice | 70 |
| Interpersonal Communications | 50 |
| Health 2: Lifestyle and Choices | 30 |
| Health Care Assistant: Introduction to Practice | 30 |
| Healing 1: Caring for Individuals Experiencing Common Health Challenges | 115 |
| Healing 2: Caring for Individuals Experiencing Cognitive or Mental Challenges | 60 |
| Healing 3: Personal Care and Assistance | 120 |
| Practice Experience in Multi-Level and/or Complex Care | 210 |
| Practice Experience in Home Support and/or Assisted Living | 60 |
| TOTAL | 745 |

Domestic Students

Fee information for the 2022 - 2023 year:

| Particulars | Fees |
|------------------|---------------|
| Application Fee | \$250 |
| Tuition Fee | \$5750 |
| Book Fee | \$175 |
| Course Materials | \$75 |
| TOTAL | \$6250 |



STUDENT AID

International Students

Fee information for the 2022 – 2023 year:

| Particulars | Fees |
|------------------|---------------|
| Application Fee | \$250 |
| Tuition Fee | \$9000 |
| Book Fee | \$175 |
| Course Materials | \$75 |
| TOTAL | \$9500 |

Financial Aid

Western Community College offers a variety of financial aid opportunities to ease students' stress and allow them to focus on their studies. If you need extra support, we have flexible funding to accommodate all our students, no matter their financial situation.

Basic Eligibility Requirements

To receive student financial assistance, you must meet all of these basic eligibility criteria:

- be a Canadian citizen, a permanent resident or have protected person status
- have a valid Canadian social insurance number
- be a resident of British Columbia
- be pursuing full-time studies as your primary occupation
- be enrolled in an eligible program of study at an eligible post-secondary institution
- be able to demonstrate financial need
- make academic progress and achieve satisfactory scholastic standing in each period of postsecondary study



ADDONS

Dementia Care

This program helps health care workers understand the complexity of Dementia and develop the skills required to support dementia care patients and their families

Duration: 2 Days

Palliative Care

Palliative care is provided to dying or terminally ill patients, who have an incurable disease, with the objective of improving the quality of life of the patient

Duration: 2 Days

Community Mental Health

The certificate in the Mental Health program builds a student's professional skills in the healthcare field

Duration: 2 Months

Activity Assistant

The Activity Assistant Certificate is designed for individuals who have the desire to implement and evaluate activity programs in a care facility.

Duration: 3 Months



For other ways to meet the admission requirements please contact our admissions team.



City Centre

Unit 900 13761 96 Ave,
Surrey, BC V3V 1Z2
+1-604-594-3500
surreyinfo@wcc.ca



Scott Road

Unit 201 8318 120 St
Surrey, BC V3W 3N4
+1-604-594-3500
info@wcc.ca



Abbotsford

Unit 201, 3670 Townline Rd
Abbotsford, BC V2T 5W8
+1-604-776-1301
abbyinfo@wcc.ca



Other Campuses

South Surrey
King George (Surrey)
Prince George