

“EXCEL IN THE FIELD OF HEALTHCARE”



HCA

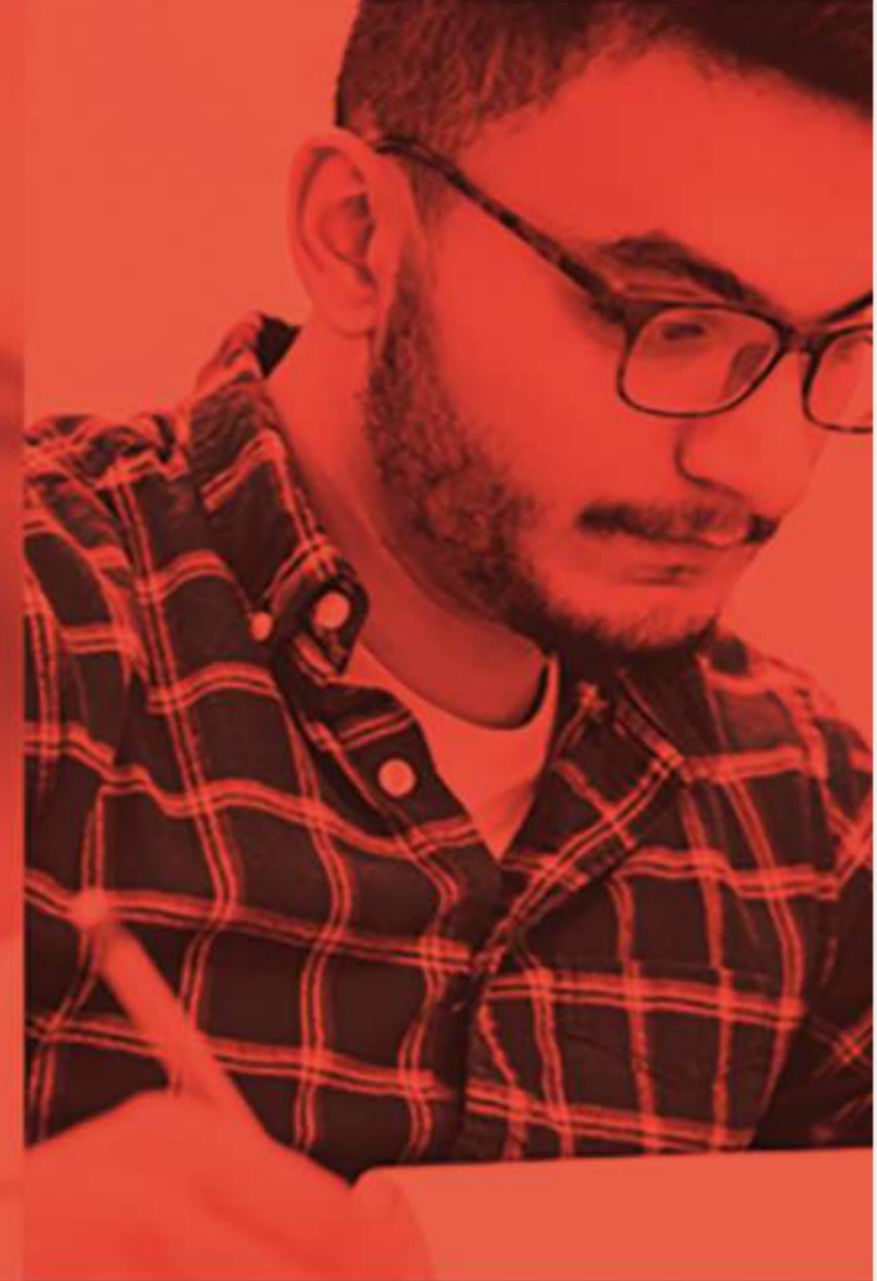
HEALTH CARE

ASSISTANT-
ACUTE

We transform communities through education

www.wcc.ca/hcaacu





TRANSFORMING
COMMUNITIES
THROUGH
EDUCATION





Program Overview

An acute care program for health care assistants is a specialized training program designed to equip health care assistants with the knowledge and skills necessary to provide quality care to patients in acute care settings. Acute care refers to the treatment of patients with severe or life-threatening medical conditions that require immediate attention. Healthcare assistants play a critical role in acute care settings as they assist registered nurses and other healthcare professionals in providing care to patients. They perform a variety of tasks, such as taking vital signs, assisting with daily activities, and providing emotional support to patients and their families. Acute care program for health care assistants includes training in a range of areas, including patient assessment, medication administration, wound care, infection control, and emergency response. The program also covers specific conditions commonly encountered in acute care settings, such as heart attacks, strokes, and respiratory failure.

Career Opportunities

Graduates of HCA-Acute program will gain specific skills in healthcare industry and be job ready on graduating and earning upto \$25 per hour. Every sub sector of healthcare industry requires skilled people. As a graduate from this program, you will be eligible for a number of job titles including:

- **Long term care facilities**
- **Home health care facilities**
- **Acute care hospitals**
- **Emergency departments**
- **Ambulance care settings**



PROGRAM ADMISSION REQUIREMENTS

Program Admission Requirements

Applicants will be required to meet the following minimum criteria:

Health Care Assistant Certificate, or equivalent, from a BC Care Aide and Community Health Worker Registry recognized educational institution:

- Current BC Care Aide and Community Health Worker Registry number.
- Standard First Aid and CPR
- Current CPR level C or HCP certificate

Notes for Admission:

The following are to be completed prior to the first practice education experience:

- a) Immunizations in the Diphtheria/Tetanus, Pertussis, Polio, Measles, Mumps, Rubella, Varicella (Chicken Pox), Hepatitis B, Influenza/Flu vaccine (required annually) and COVID-19 Vaccines are strongly recommended, and may be required for practice placement in the program
- b) Criminal record check from the Ministry of Justice, including clearance to work with vulnerable adults.
- c) Submission of a negative TB skin test. If the skin test is positive, proof of a negative TB Chest x-ray is required.



For other ways to meet the admission requirements please contact our admissions team.



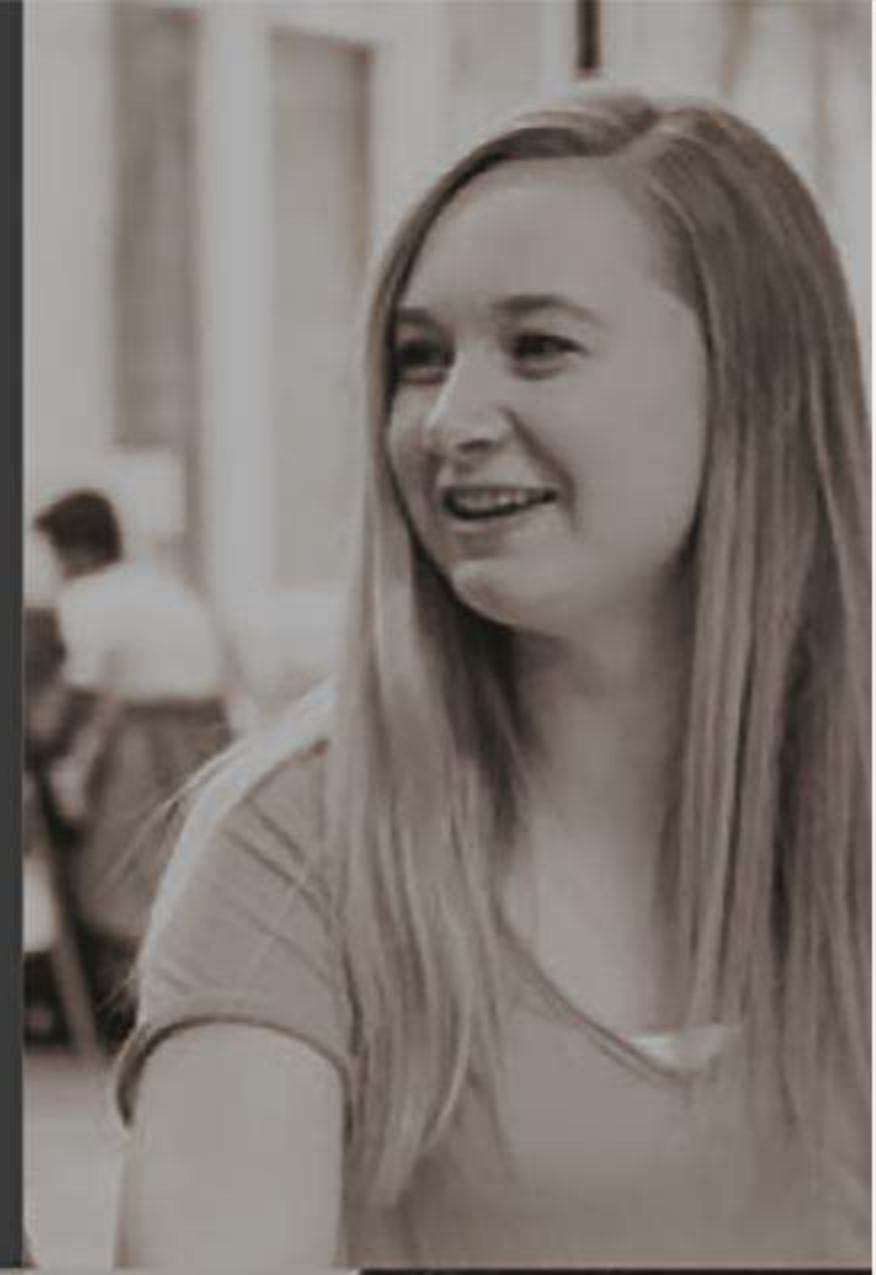
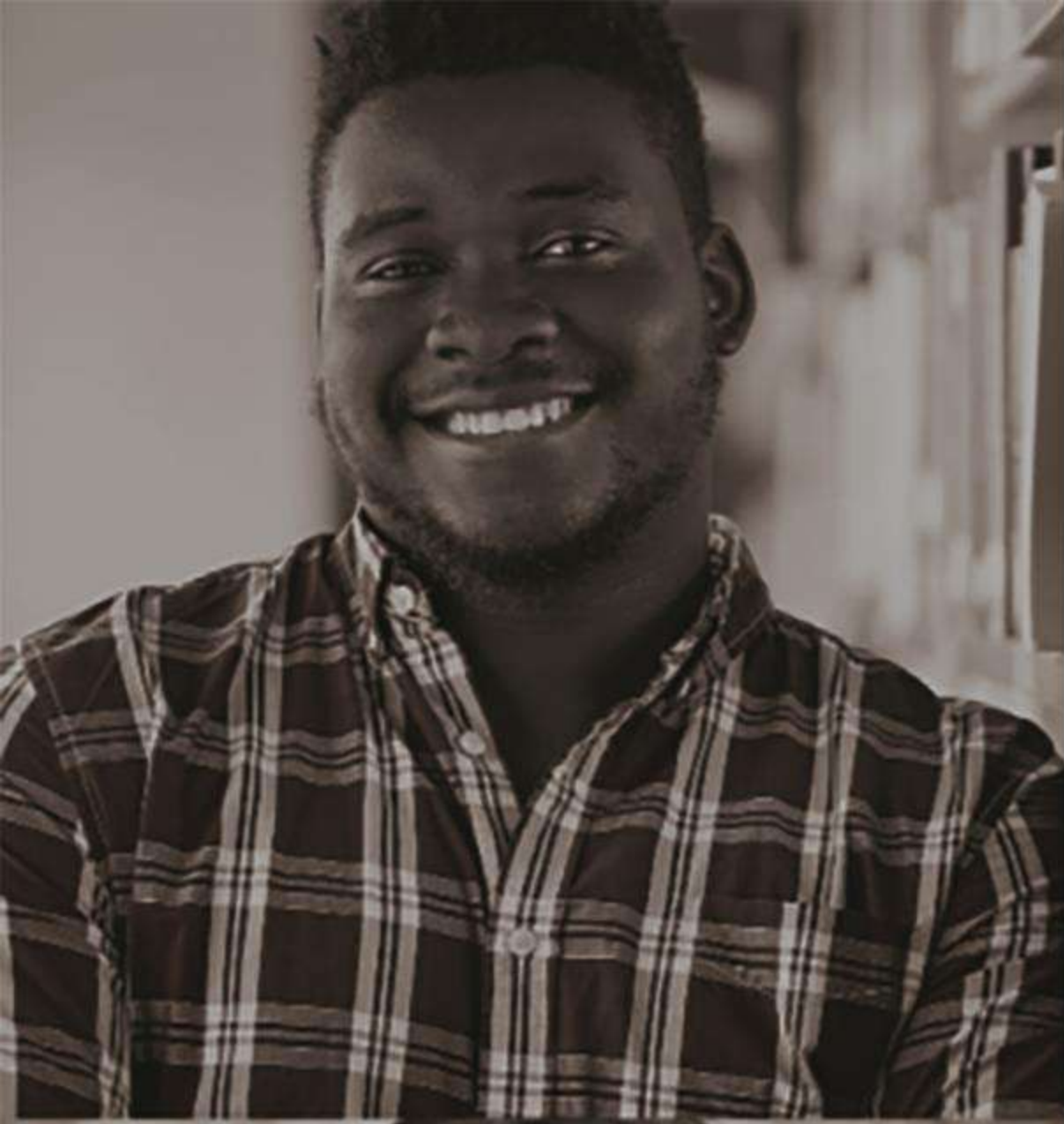
PROGRAM OUTLINE

Program Duration

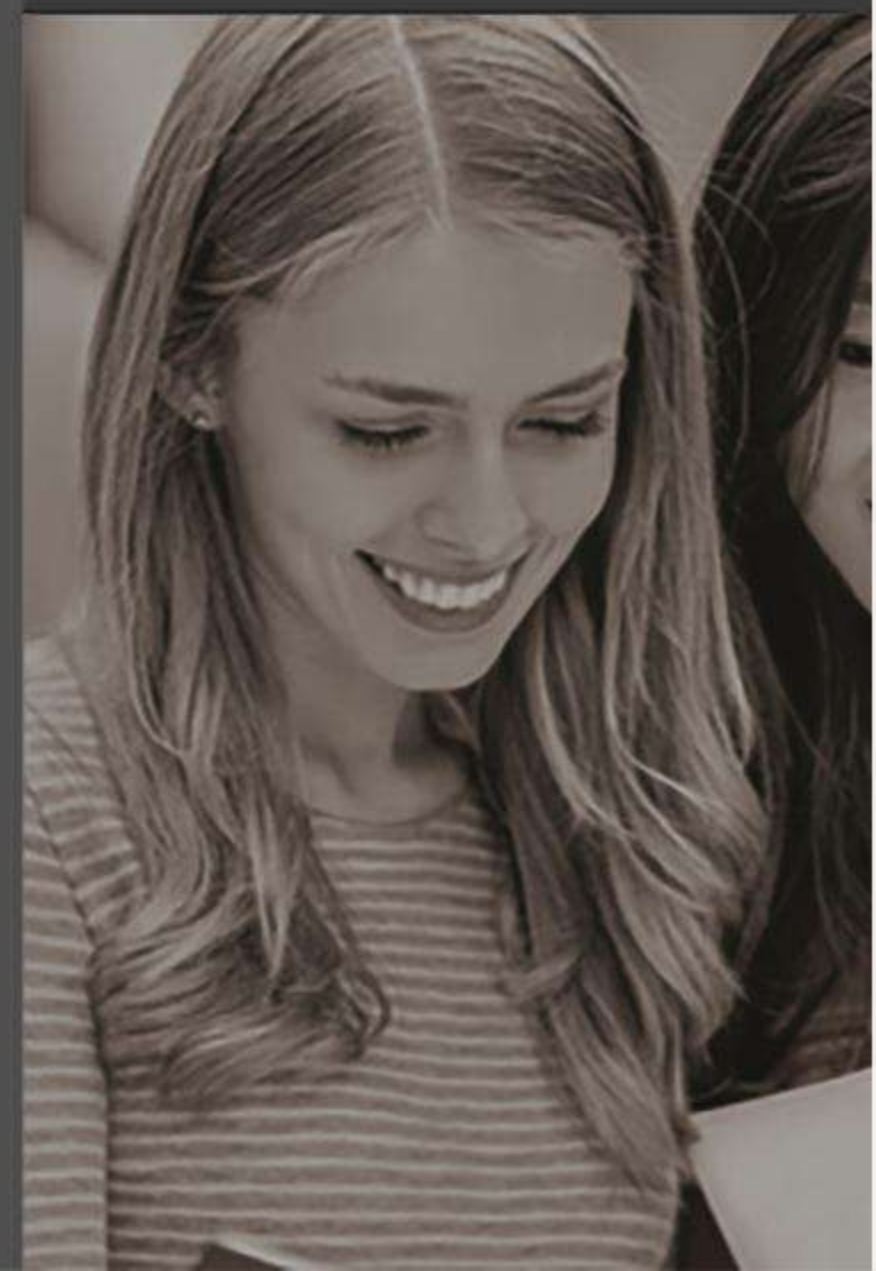
130 Hours / 6 weeks Full Time Student
10 weeks Part Time Student.

Program Outline

Course Name	# of Hours
Acute Care and Personal Assistance	45
Working in Acute Care	45
Acute Care Clinical	40
TOTAL	130



WHY HCA?



www.wcc.ca



 Practicum Experience

 Flexible Schedule

 Scholarships

 Earn up to C\$25 hourly

 Student Support Services

 Locational Advantage





FEE STRUCTURE

Domestic Students

Fee information for the 2022 – 2023 year:

Particulars	Fees
Application Fee	\$250
Tuition Fee	\$2250
Material Fee	\$200
TOTAL	\$2700

International Students

Fee information for the 2022 – 2023 year:

Particulars	Fees
Application Fee	\$250
Tuition Fee	\$3250
Material Fee	\$200
TOTAL	\$3700



STUDENT AID

Financial Aid

Western Community College offers a variety of financial aid opportunities to ease students' stress and allow them to focus on their studies. If you need extra support, we have flexible funding to accommodate all our students, no matter their financial situation.

Basic Eligibility Requirements

To receive student financial assistance, you must meet all of these basic eligibility criteria:

- be a Canadian citizen, a permanent resident or have protected person status
- have a valid Canadian social insurance number
- be a resident of British Columbia
- be pursuing full-time studies as your primary occupation
- be enrolled in an eligible program of study at an eligible post-secondary institution
- be able to demonstrate financial need
- make academic progress and achieve satisfactory scholastic standing in each period of postsecondary study

i NOTE: All information submitted as part of your application package, including information provided by your parents or spouse/common-law partner in appendices, is subject to verification and audit.

NOTE: You can only apply to one province for funding

i You may not be eligible if you have:

- Delinquent or in default of previous student loans.
- Under audit or have an overaward (in this case your funding may be withheld), or
- Incarcerated or have any outstanding warrants for your arrest



SURREY

604.594.3500
info@wcc.ca

ABBOTSFORD

604.776.1301
abbyinfo@wcc.ca

 **Surrey, BC**

Unit 201-8318 120 St
Surrey, BC V3W 3N4

 **Abbotsford, BC**

Unit 201-3670 Townline Rd
Abbotsford, BC V2T 5W8

Other Campus Locations

King George, Prince George, Tech and Trades, South Surrey, Surrey Central

[WWW.WCC.CA](http://www.wcc.ca)