

“ SAFEGUARD, OPTIMIZE, EXCEL ”



NA

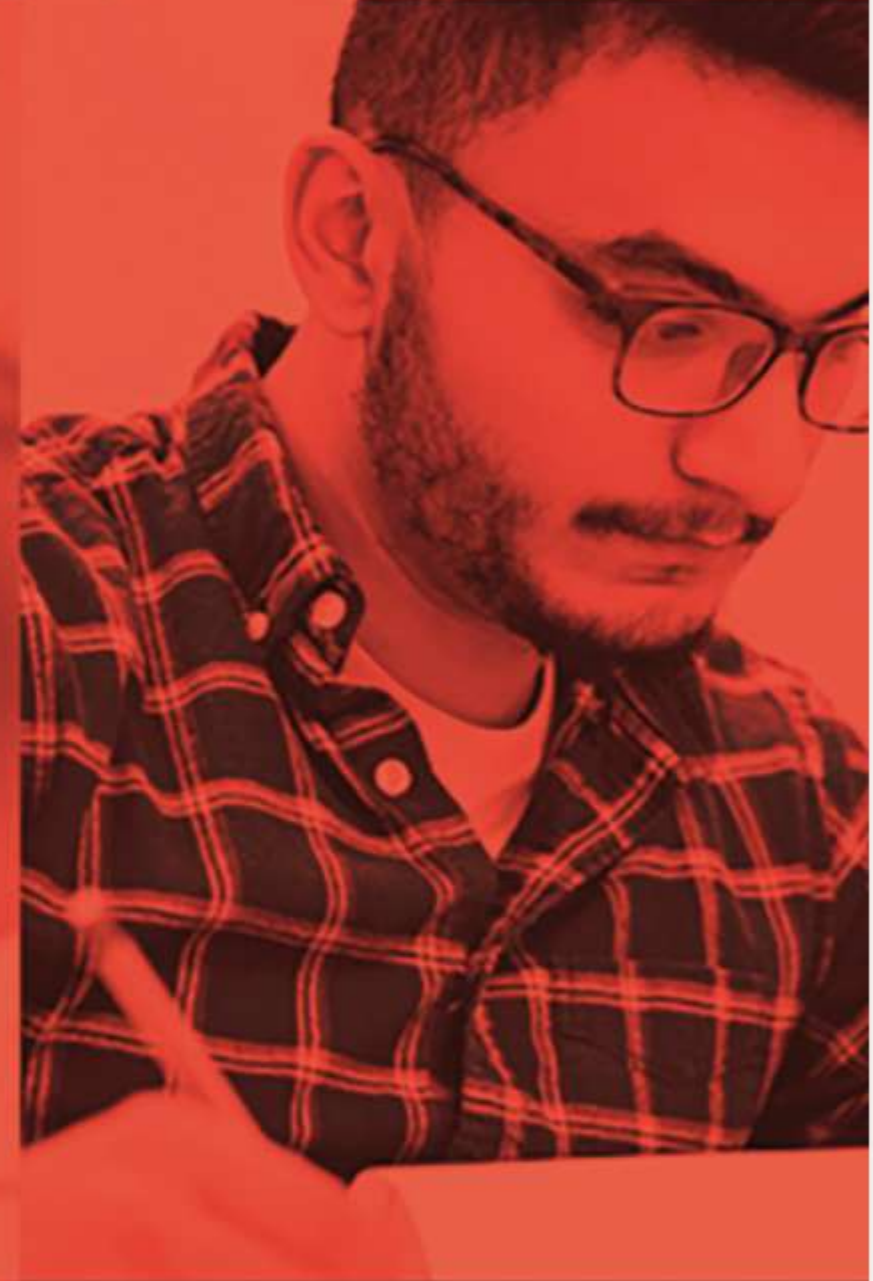
# NETWORK ADMINISTRATOR --- DIPLOMA

*We transform communities through education*

[www.wcc.ca/na](http://www.wcc.ca/na)







# TRANSFORMING COMMUNITIES THROUGH **EDUCATION**

---







## Program Overview

Network Administrator program fulfills the need for trained entry-level network administrators and security professionals. This program provides the essential networking and security technical knowledge, as well as essential business and professional skills, such as teamwork and communication, which are needed to succeed in administrative and management IT positions in the information technology industry.

Network Administrator program prepares individuals to plan, manage, and secure the network infrastructure of an enterprise. The program includes knowledge and skill development in business communications and leadership, as well as the essential technical knowledge. The technology focus of this program is network administration, with an emphasis on Windows environments, hardware tools, networking tools and security of the network infrastructure.

## Career Opportunities

Becoming an Information Technology Network Administrator is as easy as applying online to Western Community College. The program prepares student to write industry certification exams, such as CompTIA A+, Network+, Security+ and CCNA. As a graduate from this program, you will be eligible for a number of jobs like...

- **Network Administrator**
- **Cloud Network Solution**
- **Cloud Computing Specialist**
- **System Engineer**
- **Network Security Analyst**





# PROGRAM ADMISSION REQUIREMENTS

## Program Admission Requirements

**Applicants will be required to meet the following minimum criteria:**

An undergraduate degree from a recognized institution and proof of English language proficiency. Students will need to submit a proof of English Language Competency by any one of the following options:

### **Domestic Students:**

- Grade 10 English
- English Language Proficiency Assessment Test conducted by the College

### **International Students:**

- IELTS: 5.5 or
- TOEFL (paper): 550 or
- TOEFL (IBT): 79 or
- Canadian Language Benchmark Test (CLB): 6
- PTE Academic: 50 or
- Cambridge: CAE



For other ways to meet the admission requirements please contact our admissions team.



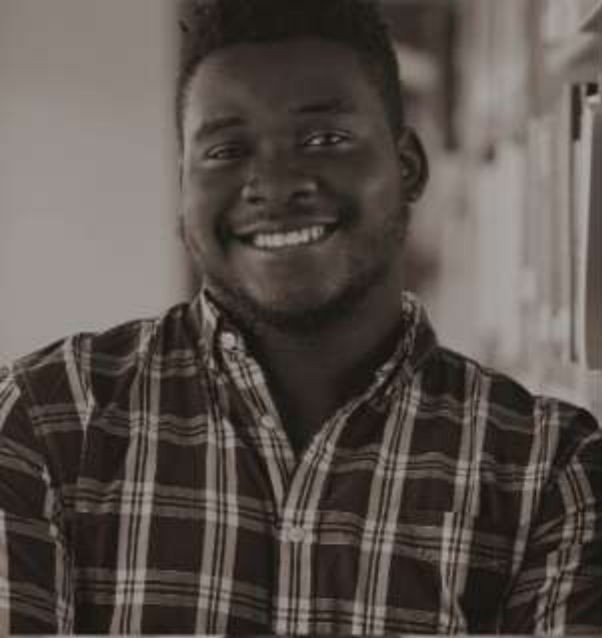
# PROGRAM DURATION & OUTLINE

## Program Duration

1120 hours, 56 weeks Full-Time

## Program Outline

Course Name	# of Hours
Introduction to Computers	60
Technical Support Essentials	100
Computer Operating System I	160
Networking I	100
Networking II	120
Security Fundamentals	80
Cloud Essentials	100
Cloud Administration	180
Career Preparation	60
Network Administrator Practicum	160
<b>TOTAL</b>	<b>1120</b>



# WHY NA?




[www.wcc.ca](http://www.wcc.ca)

A vertical collage of three student photos on the left side of the page. The top photo shows a person's shoulder and arm. The middle photo shows a person's face with glasses. The bottom photo shows a smiling woman.

 Practicum Experience

 Flexible Schedule

 Scholarships

 Earn up to C\$49\* per hour

 Student Support Services

 Locational Advantage

A large, light pink, stylized 'W' graphic that spans the bottom half of the page.





# FEE STRUCTURE

## Domestic Students

Fee information for the 2022 – 2023 year:

Particulars	Fees
Application Fee	\$250
Tuition Fee	\$12000
Materials Fee	\$250
<b>TOTAL</b>	<b>\$12500</b>

## International Students

Fee information for the 2022 – 2023 year:

Particulars	Fees
Application Fee	\$250
Tuition Fee	\$15000
Materials Fee	\$250
<b>TOTAL</b>	<b>\$15500</b>



# STUDENT AID AND BURSARIES

## Financial Aid

Western Community College offers a variety of financial aid opportunities to ease students' stress and allow them to focus on their studies. If you need extra support, we have flexible funding to accommodate all our students, no matter their financial situation.

### **BC Student Loan**

Western Community College offers a variety of financial aid opportunities to ease students' stress and allow them to focus on their studies. If you need extra support, we have flexible funding to accommodate all our students, no matter their financial situation.





## SURREY

**604.594.3500**  
[info@wcc.ca](mailto:info@wcc.ca)

## ABBOTSFORD

**604.776.1301**  
[abbyinfo@wcc.ca](mailto:abbyinfo@wcc.ca)



Surrey, BC

Unit 201-8318 120 St  
Surrey, BC V3W 3N4



Abbotsford, BC

Unit 201-3670 Townline Rd  
Abbotsford, BC V2T 5W8

### Other Campus Locations

King George, Prince George, Tech and Trades, South Surrey, Surrey Central

[WWW.WCC.CA](http://WWW.WCC.CA)